

A TRASH TAX IS THE WRONG MESSAGE TO SEND to Delaware's businesses and residents.

House Bill 159, now in the Senate, would establish a Delaware Recycling Fund through a \$3 per ton tax on trash. **Don't be fooled by the term assessment or fee – let's be honest – it's a tax!**

Taxes always increase costs . . .

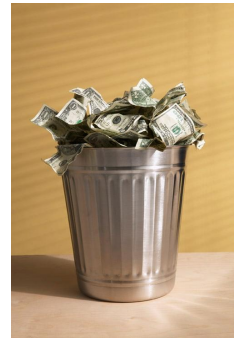
The tax amount is in addition to your collection service fee and the cost of separately collecting recyclables. There is no guarantee in HB 159 that the profits, if any, from the sale of recyclables will be used to pay for these services.

Higher taxes are a burden on senior citizens and people on fixed incomes . . .

A penny here, a penny there, it all adds up. For Delaware residents on fixed incomes, including senior citizens living on social security, any new tax is a burden. Soaring gasoline prices are already hurting our residents, why add to their cost of living?

Taxes are assessed unequally . . .

Local governments that already offer a program to all residents are exempt from paying the tax. Delaware residents who recycle on their own, use the Delaware Solid Waste Authority, or a private hauler for recycling, will pay this tax. The exemption is not offered to local businesses that have recycling programs. Local governments that are exempt from paying the tax could receive state funding, forcing non-exempt communities to subsidize them. People that do not pay the tax will still be able to receive funding.



Taxes send a message that free enterprise is unwelcome . . .

When investors and business owners consider where to build, they look at taxes to see whether free enterprise is welcome. HB 159 creates an unfriendly atmosphere because local businesses and colleges will pay the tax when competitors in other states will not. The tax applies to all trash, including construction and demolition waste, commercial waste, and municipal solid waste. There are no exceptions for businesses or schools already recycling or who are planning a recycling program.

More than 60,000 households are already recycling . . .

The people of Delaware already have recognized the need to recycle without state legislation. The number of households engaging in recycling efforts is increasing every day. Taxes only serve to hinder this on-going effort.

**HB 159 is an unnecessary and unfair tax that falsely claims to increase recycling.
Say yes to recycling and no to taxes.**

Call your Senator today and tell him/her to vote no on HB 159.

Thurman Adams (Bridgeville --19) – 744-4318
Steven Amick (Glasgow – 10) – 744-4138
Patricia Blevins (Elsmere – 7) – 744-4133
Colin Bonini (Dover South – 16) – 744-4169
George Bunting (Bethany Beach – 20) – 744-4144
Catherine Cloutier (Heatherbrooke – 5) – 744-4137
Dorinda Connor (Penn Acres – 12) – 744-4164
Nancy Cook (Kenton – 15) – 744-4237
Charles Copeland (West Farms – 4) 577-8716
Anthony DeLuca (Variano – 11) – 744-4165
Bruce Ennis (Clayton – 14) – 653-7566

Margaret Henry (Wilmington East - 2) -- 744-4191
Robert Marshall (Wilmington West – 744-4168
David McBride (Hawk's Nest – 13) – 744-4167
Harris McDowell (Wilmington North – 1) – 744-4147
Karen Peterson (Stanton – 9) – 744-4163
Gary Simpson (Milford – 18) – 744-4134
David Sokola (Newark – 8) – 744-4139
Liane Sorenson (Hockessin – 6) – 577-8517
John Still (Dover North – 17) – 744-4162
Robert Venables (Laurel – 21) – 744-4298

Don't know who your senator is, call:

New Castle County: 577-3464 Kent County: 739-4498 Sussex County: 856-5367